

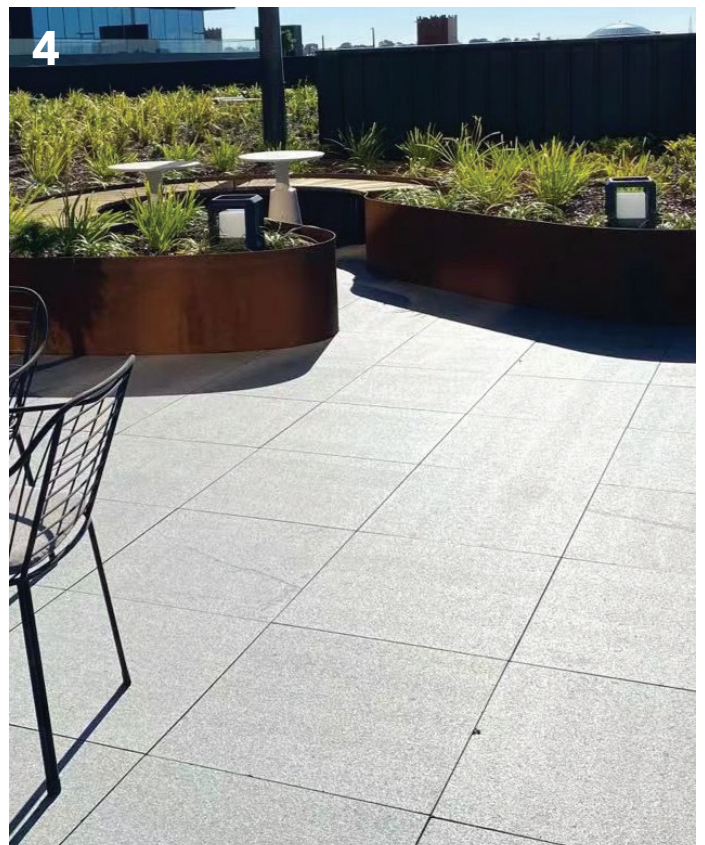
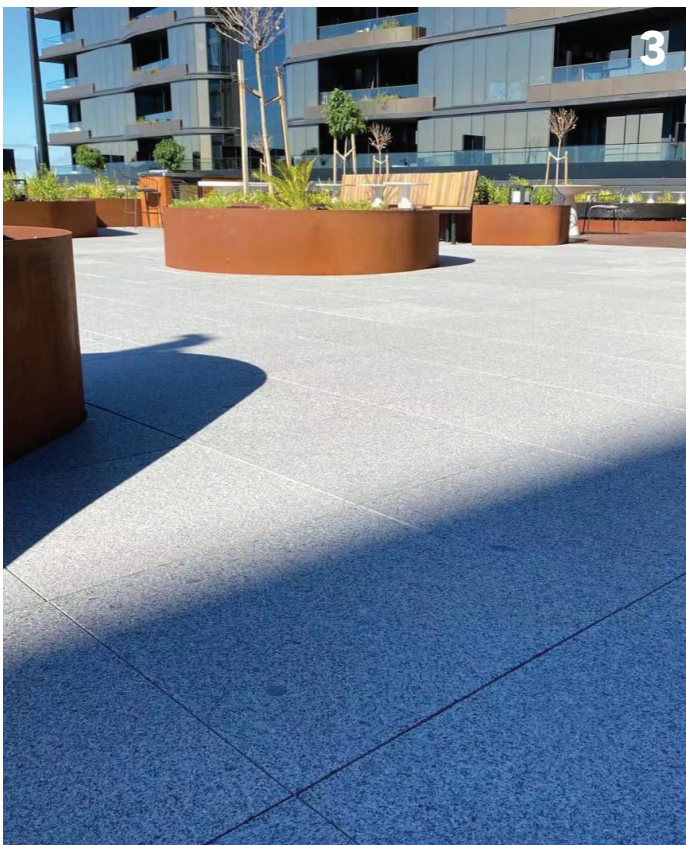
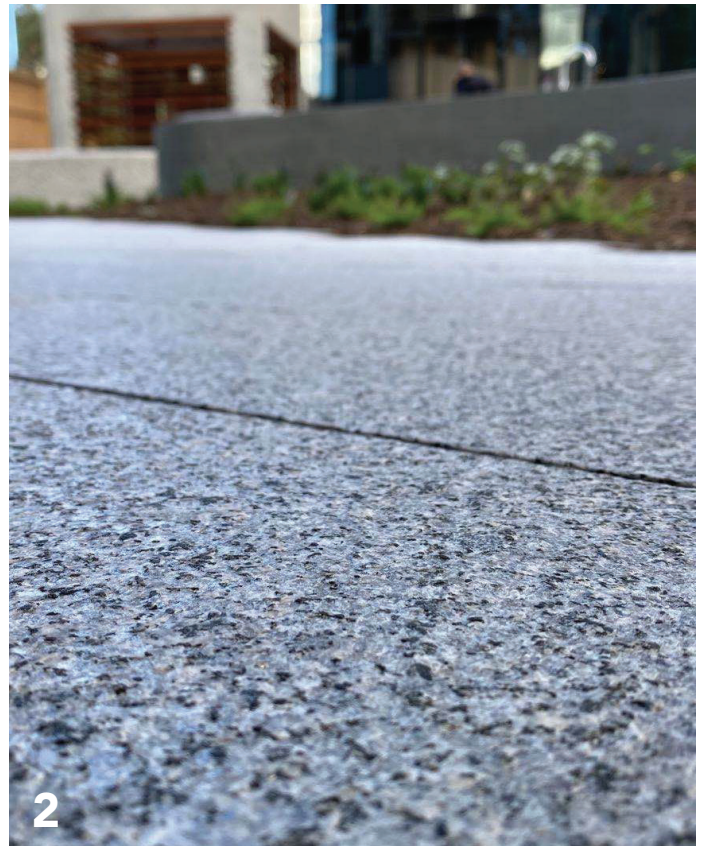
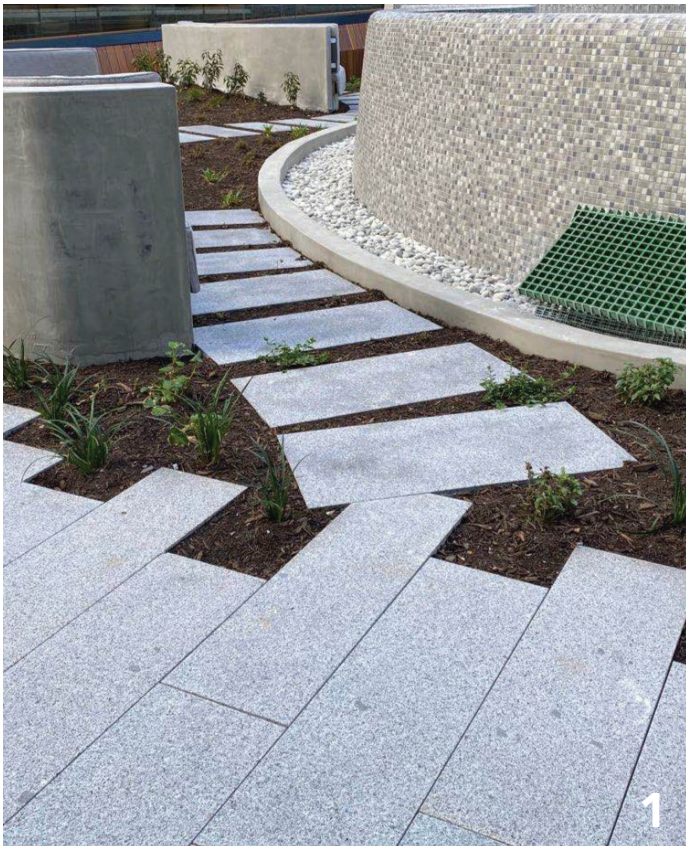


Flamed

New Grey

Granite





1 Garden, Paving

2 Outdoor Paving Finish Details

3 Commercial Project

4 Looking under the sunlight

Finish

Sawn	Honed	Flamed	Sandblasted	Rockface/ Natural Split	Tumbled and Unfilled	Honed and Filled	Acid Wash & Tumbled
P5 <input type="checkbox"/>	P3 <input checked="" type="checkbox"/>	P5 <input checked="" type="checkbox"/>	P5 <input type="checkbox"/>	P5 <input type="checkbox"/>	P5 <input type="checkbox"/>	P3 <input type="checkbox"/>	P5 <input type="checkbox"/>

- ☒ Standard Stock
- ☒ Made to Order
- ☐ Not Available

Format

- ☒ Paving
- ☒ Coping
- ☒ Stepper
- ☒ Cobble
- ☒ Slab

Slip Rating
P1 - Very low slip resistance
P2 - Low slip resistance
P3 - Moderate slip resistance
P4 - Good slip resistance
P5 - Very high slip resistance

Application

- ☒ Exterior Paving and Pathway
- ☒ Pool Surrounds
- ☒ Driveway
- ☒ Light Traffic
- ☒ Regular Traffic
- ☒ Commercial Area
- ☒ Interior Walling
- ☒ Exterior Walling
- ☒ Feature Walls

Sealing Requirement

- ☐ Optional
- ☒ Recommended
- ☐ Required

Stone Properties

Slip Resistance	Salt Resistance	Abrasion	Strength	Water Absorption	Comprehensive Strength	Flexural Strength	Light Reflectance Value (LRV)
AS 4586	AS/NZS 4456.10						
P5	Exposure Grade						

Type and Size (mm)

Finish	Paver	Coping	Stepper	Cobbles	Walling	Slab
Flamed	600x400x20	600x400x20 drop 60 600x400x30 bevelled 600x230x20 bevelled	Made to order	Made to order	Made to order	Made to order
Honed	Made to order	Made to order	Made to order	Made to order	Made to order	Made to order



Daily Maintenance

- Sweep or blow off leaves, dust, and sand regularly to avoid surface abrasion.
- Rinse with a hose occasionally, especially in dusty or muddy areas.
- Avoid placing metal furniture directly on the surface to prevent rust stains.
- For outdoor kitchens or BBQ areas, wipe up oil and food spills promptly to avoid staining.

Sealing

- Flamed granite is more porous than polished or honed granite due to its textured surface.
- Seal every 12 months or more frequently if the area is exposed to heavy traffic, grease, or constant moisture.
- Use a penetrating (impregnating) sealer made for textured, natural stone and outdoor use (UV- and weather-resistant).
- Optional: Use a color enhancer sealer if a darker or richer appearance is desired (test on a sample area first).

Cleaning

- Use a pH-neutral stone cleaner or diluted mild detergent (non-acidic, non-alkaline).
- Pressure washing is generally safe. Use low to medium pressure. Keep the nozzle at a reasonable distance to avoid surface damage.
- For stubborn stains, apply a poultice or stone-safe degreaser for oil-based stains. Use a specialized rust remover for iron stains—ensure it's safe for granite.
- Avoid:
 - Acidic cleaners (e.g., vinegar, lemon, acidic tile cleaners)
 - Harsh chemicals like bleach or ammonia
 - Abrasive brushes that may break down the stone surface over time

SAI Stone offers a wide range of cleaning and sealing products, as well as glue and grouting solutions. If you need more information or assistance, don't hesitate to reach out!

Contact Us

5 Hamilton Street
VIC 3166
Australia

1300 855 851
info@saistone.com.au
saistone.com.au

