



Sawn

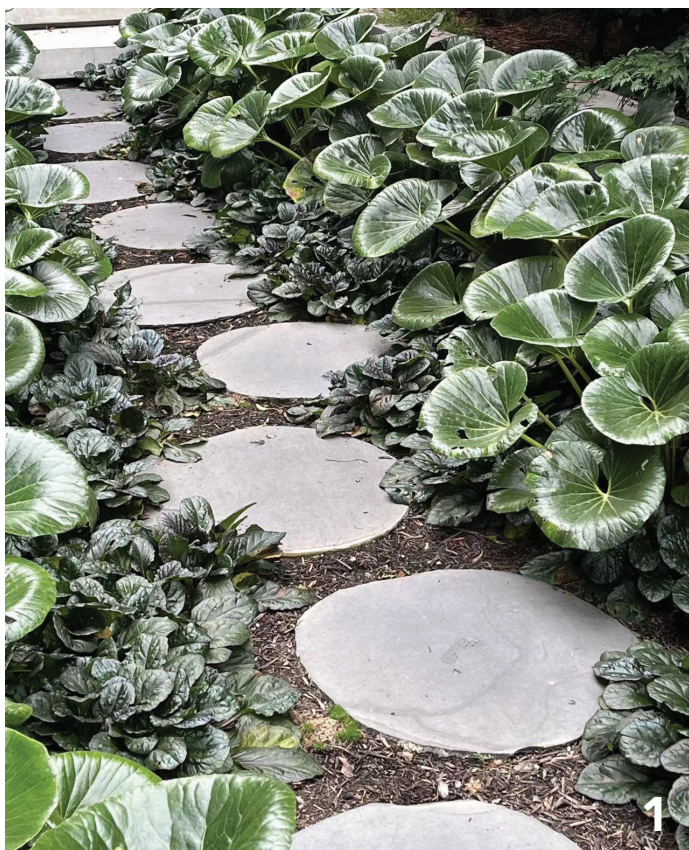


Honed

*Blue Ocean*

Bluestone



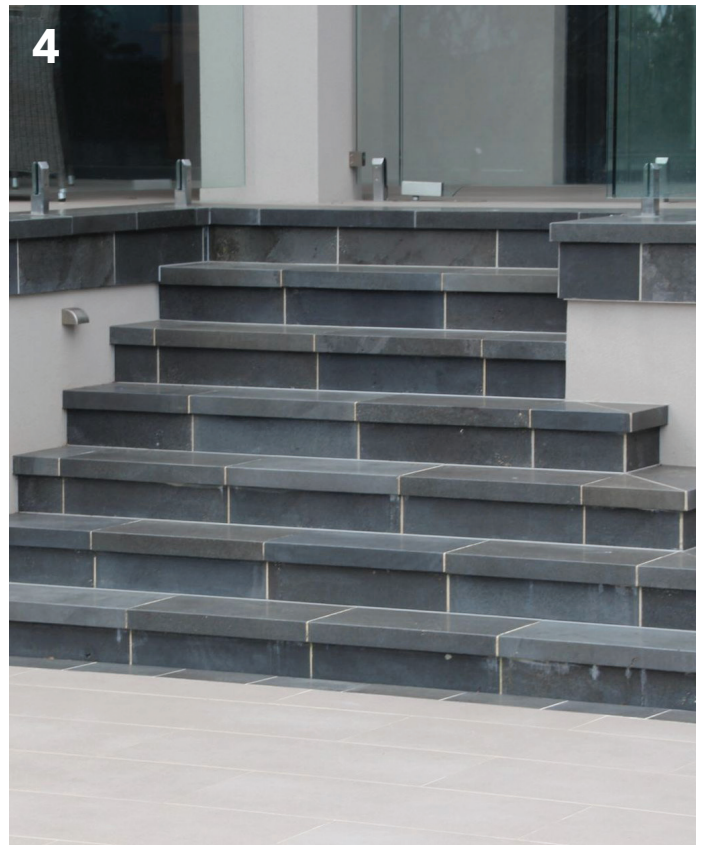
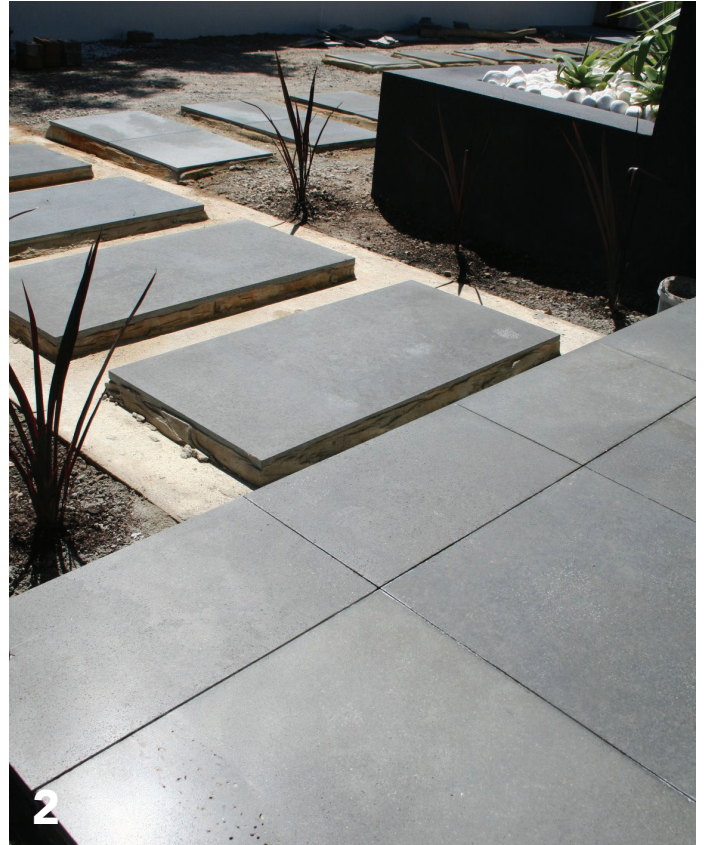


1 Organic Stepper

2 Commercial Project, Street Block

3 Garden Paving

4 Pool Surrounds, Curved Coping



1 Pool Surrounds, Crazy Paver

2 Garden Paving

3 Outdoor Benchtop

4 Outdoor Steps

Finish

Sawn	Honed	Flamed	Sandblasted	Rockface	Tumbled and Unfilled	Honed and Filled	Acid Wash & Tumbled
P5	P3	P5	P5	P5	P4	P2	P5
<input checked="" type="checkbox"/>	<input checked="" type="checkbox"/>	<input checked="" type="checkbox"/>	<input type="checkbox"/>	<input checked="" type="checkbox"/>	<input type="checkbox"/>	<input type="checkbox"/>	<input type="checkbox"/>

- ☒ Standard Stock
- ☒ Made to Order
- ☐ Not Available

Format

- ☒ Paving
- ☒ Coping
- ☒ Stepper
- ☒ Cobble
- ☒ Slab

Application

- ☒ Exterior Paving and Pathway
- ☒ Pool Surrounds
- ☒ Driveway
- ☒ Light Traffic
- ☒ Regular Traffic
- ☒ Commercial Area
- ☒ Interior Walling
- ☒ Exterior Walling
- ☒ Feature Walls

**Slip Rating**

P1 - Very low slip resistance

P2 - Low slip resistance

P3 - Moderate slip resistance

P4 - Good slip resistance

P5 - Very high slip resistance

**MTO - Made to Order**

Sealing Requirement

- ☐ Optional
- ☒ Recommended
- ☐ Required

Stone Properties

Slip Resistance	Salt Resistance	Abrasion Strength	Water Absorption	Comprehensive Strength
AS 4586	AS/NZS 4456.10	EN 14157	EN 14157	EN 1926
P3,P5	Exposure Grade	15.6 mm	1.48%	151 Mpa

Open Porosity	Flexural Strength	Light Reflectance Value (LRV)
EN 1936	EN 13364	AS 1428.1
6.98%	20.1 Mpa	Dry: 15.88 Wet:3.81



## Type and Size (mm)

Finish	Paver	Coping	Stepper	Cobbles	Slab
Sawn	600x300x12	<b>Dropface</b> 600x400x20 drop 40 800x400x20 drop 50 600x400x20 drop 60 800x400x20 drop 60 500x500x30 drop 80 800x400x30 drop 80 1005x500x30 drop 80			
	300x100x20				
	400x400x20				
	500x500x20				
	600x300x20				
	600x400x20				
	600x600x20				
	800x400x20				
	800x800x20				
	995x495×20	<b>Bevelled Edge</b> 600x300x30 600x350x30 600x400x30 800x400x30 1005x350×30 1005x500x30	500-700x20  300-500x30 500-700x30 700-900x30 800-1000x150	Cobble on Mesh 650x430x20	1600-1800x810x20  1600-1800x810x30 1600-1800x810x40 1600-1800x810x50 1600-1800x810x60
	1000x1000x20				
	1005x500x20				
	1200x600x20				
	400x400x30				
	600x300x30				
	600x600x30				
	800x400x30				
	495x495×40				
	995x495x40				
	995x495×40				
	Crazy Paving x 20				
	Ashlar Pattern x20				
	300-400x200x60(Pitcher)				
	<b>Bullnose</b> 600x300x20 600x350x30 600x400x30 800x400x30 1005x350x30				
Honed	600x300x12	<b>Dropface</b> 600x400x20 drop 40 600x400x20 drop 60 1005x500x30 drop 80	500-700x30	MTO	1600-1800x810x20 1600-1800x810x30 1600-1800x810x40 1600-1800x810x50 1600-1800x810x60
	600x600x12				
	800x400x15				
	300x100x20	<b>Bevelled Edge</b> 500x500x30 600x300x30 600x350x30 600x400x30 800x400x30			
	600x300x20				
	600x400x20				
	600x600x20				
	800x400x20				
	800x800×20				
	1005x500x20				
	1200x600x20	<b>Bullnose</b> 600x300x20 600x350x30 600x400x30			
	Crazy Paving x20				
	Ashlar Pattern x20				

## Daily Maintenance

- Sweep or use a leaf blower to remove dirt, leaves, and debris, especially in textured areas.
- Rinse with water to wash away dust and surface grime. Rain usually helps, but hosing occasionally maintains appearance.
- Avoid dragging heavy furniture or tools across the surface to prevent chipping on the split edges.
- Use rubber pads under pots, outdoor furniture, or metal items to avoid rust marks or scratches.

## Sealing

### *Sawn Finish* (Lightly textured, slip-resistant)

- Slightly more porous than honed, and can trap fine dust.
- Seal every 12–18 months with a penetrating sealer that is suitable for natural stone and exterior use.
- A color-enhancing sealer can enrich the natural dark tone and reduce patchiness (optional).

### *Honed Finish* (Smooth, matte surface)

- Less porous than sawn, but still needs protection from oil, tannins, and water marks.
- Seal every 18–24 months with a high-quality impregnating sealer.
- Consider sealing more often in pool areas or exposed, shaded spots prone to moss growth.

Test if resealing is needed: pour a few drops of water—if it darkens the stone, it's time to reseal.

## Cleaning

- Clean with a pH-neutral stone cleaner or a mild soap diluted in water.
- Do not use acidic cleaners (vinegar, lemon, harsh grout cleaners), which will etch and damage the surface.
- Low pressure washing is safe.
- For general cleaning, scrub gently with a soft bristle brush to reach into the brushed surface texture. Rinse thoroughly to avoid residue buildup.
- For stubborn stains, use a stone-safe poultice for oil, rust, or organic marks. Consider spot sealing after treating stains.

***SAI Stone offers a wide range of cleaning and sealing products, as well as glue and grouting solutions. If you need more information or assistance, don't hesitate to reach out!***

## Contact Us

5 Hamilton Street  
VIC 3166  
Australia

1300 855 851  
info@saistone.com.au  
saistone.com.au

